



Annual Report

2021

**Northeast Missouri Regional
Planning Commission / Rural
Development Corporation**

Serving Adair, Clark, Lewis, Knox, Schuyler
and Scotland counties and the 33 villages
and cities located within.

if you want to go
quickly, go alone.
if you want to go
far, go together.

Introduction

The Northeast Missouri Regional Planning Commission (NEMO RPC) was created by the State of Missouri and Governor Warren E. Hearnes on the 19th day of March in 1969. NEMO RPC was formed to coincide with the boundaries of the counties of Adair, Clark, Knox, Schuyler, and Scotland. The original region served the five counties and 27 incorporated cities for a total of 32-member governments. In 1992, Lewis County petitioned the State of Missouri and the NEMO RPC membership to join the region and later that year was assigned by the state to the boundaries of the Northeast Missouri Regional Planning Commission/ Rural Development Corporation and Economic Development District.



Table of Contents

Performance Highlights	04
Director's Message	05
About NEMO RPC/RDC	06
Mission	08
Leadership	10
Elected Officials	12
Our Team	14
Member Services	16
Solid Waste Management	18
Hazard Mitigation	20
Economic Development	22
Wind Energy Lab CDBG	24
CDBG	26
Revolving Loan Program	29
SCPHA	30
Transportation	32
MHTC Hearing	36
Associate Members	39
Financial Review	40
County Government	42
Municipal Government	44
CARES Act	50

Today, we serve
Adair, Clark, Knox,
Lewis, Schuyler,
and Scotland
counties and the
33 incorporated
cities for a total
of 39-member
governments
in Northeast
Missouri.

Annual Report
2021

Performance highlights

for the year to 30th June, 2021

Workforce development

\$480,688

**MACC Kirksville
Wind Lab CDBG**

Goal to train 96 students as certified wind energy technicians in program's first two years.

A roof over your head

\$797,400

Rental Assistance

Helping nearly 300 area families secure affordable housing in our communities.

Better roads & bridges!

38.7%

**TAC Transportation
Needs List Funded**

12 of the 31 priority road and bridge projects identified by the TAC have been completed or programmed by MoDOT

Economic recovery

\$400,000

**EDA CARES Act
Grant**

Helping develop a recovery and resiliency plan, tied to our Comprehensive Economic Development Strategy.

COVID-19 hit as the 2020 annual summary was being compiled, and the pandemic took center stage in the 2021 annual report and appears likely to be a recurring theme at least through 2022.

Executive Director's message

Advancing through difficult times...

The Northeast Missouri Regional Planning Commission and Rural Development Corporation annual report offers us the opportunity to share facts and information regarding services offered by our organization, while recognizing accomplishments of the year passed. This report opens on a solemn note, as the NEMO RPC family was saddened by the loss of longtime Assistant Housing Director Patty Howes, who passed away unexpectedly on August 10, 2021. That tragedy came shortly after the passing of Financial Officer Teresa Skinner's husband, Kevin.

COVID-19 entered the picture at the end of the previous fiscal year before taking center stage in this report cycle. COVID-19, and more precisely recovery and resiliency efforts that resulted from the pandemic, dominated efforts of local, state and federal government. NEMO RPC worked with its six counties and 33 municipal members to help navigate the Coronavirus Aid, Relief and Economic Security (CARES) Act. Our staff, led by Marla Greiner, helped administer the nearly \$3 million in CARES Act funds for Adair County. The NEMO RPC also secured a \$400,000 EDA CARES Act grant to aid in the development of an economic recovery and resiliency plan that matches up with our Comprehensive Economic Development Strategy, to address the economic impacts of the coronavirus pandemic. Part of that grant is being used to fund a broadband service area mapping project that we hope will assist members in securing state and federal

funding to provide more complete internet coverage in our communities. We joined forces with Senator Cindy O'Laughlin to host a regional meeting in the spring to help municipal and county governments prepare for the American Recovery Program Act and the newest wave of COVID recovery federal funding.

It is impossible to review the completed fiscal year July 1, 2020 through June 30, 2021 without a major focus on the transportation improvements being made in our region. Through the efforts of the NEMO RPC staff and the Transportation Advisory Council a number of high priority needs are being met. Nearly 40% of the TAC's 2020 priority needs list has been completed or programmed for completion by the Missouri Department of Transportation. Our efforts have ensured that the Missouri Highway and Transportation Commission is aware of the declining condition of low volume routes in our region and has already resulted in additional funding targeting these state lettered routes and improving their poor pavement conditions. The FARM program coupled with the Governor's Focus on Bridges program have resulted in the replacement of several of our region's worst bridges.

The Region C Solid Waste Management District administered by the NEMO RPC exceeded the two previous years combined, with seven total approved grants for nearly \$140,000 to support and promote local recycling efforts.

We joined forces with Adair County and Moberly Area Community College to help secure a \$480,000 Com-

munity Development Block Grant for workforce development to assist with the creation of a new electronics lab at the college's Kirksville campus for the creation of a certified wind technician program.

Scotland County Public Housing Agency assisted more than 360 families, providing nearly \$800,000 in rental assistance while administering the Section 8 Housing Choice Vouchers for the U.S. Department of Housing and Urban Development in Adair (excluding the city of Kirksville), Clark, Knox, Schuyler and Scotland counties.

While the 2021 fiscal year was a success as we worked to recover from COVID-19 and mitigate future hazards, we already have turned an eye toward bigger and better things. As always, our focus remains on assisting our members to create an even better standard of living for all by expanding local entrepreneurship, and encouraging business development and expansion of our economy by focusing on improving infrastructure, making capital available for growth and expansion, highlighting and studying housing and technology needs and advancing educational opportunities. The staff of the NEMO RPC and I look forward to working with you to make Northeast Missouri even better.

Derek Weber
Executive Director



About NEMO RPC/RDC

What we do **together** can make a difference.

The NEMO RPC was formed on March 19, 1969. Nearly a decade later, on August 16, 1978, the Northeast Missouri Regional Planning Commission incorporated the Northeast Rural Development Corporation (NEMO RDC) to expand the mission and objectives for the region in Northeast Missouri. The Corporation was established as a not-for-profit 501(c) 3 with the same by-laws as the Regional Planning Commission and the Commission and Corporation would be one and the same.

Three years earlier, in December, 1975, the NEMO RPC had entered into a cooperative agreement with the Counties of Adair, Clark, Knox, Schuyler and Scotland to formulate the Public Housing Agency (PHA) for the member counties, becoming the administrative agency for the newly formed Scotland County Public Housing Agency.

The region shares the active spirit of cooperatively working together to solve problems and plan the future development of Northeast Missouri. The region experiences the same human, natural, and economic development needs. The region as a unit promotes public safety, general welfare, and economic prosperity for our citizens.



Our Objectives

- ➔ Make Adair, Clark, Knox, Lewis, Schuyler and Scotland counties better places to live today, than they were yesterday.
- ➔ Promote public safety through transportation improvements.
- ➔ Enhance economic development in the region by assisting individuals, communities and businesses to build partnerships and leverage resources to create revenue, jobs and community vitality.



Our Goals

- ➔ Promote recycling and reduce the amount of refuse generated in our communities that is going into landfills.
- ➔ Assist communities to recover from disasters and to mitigate future hazards.
- ➔ Identify and prioritize transportation needs of the region and work on behalf of the communities with state and federal officials to identify funding and bring more projects home.

What does the future hold...

2013

In February 2013, NEMO RPC/RDC relocated to its new facility at 121. S. Cecil St., Memphis, MO.

1992

In late 1992, The State of Missouri assigned the County of Lewis to the boundaries of the NEMO RPC/RDC.

1978

On August 16, 1978, the NEMO RPC incorporated the Northeast Rural Development Corporation (NEMO RDC) to expand the mission and objectives for the region in Northeast Missouri.

1975

On December 22, 1975, the NEMO RPC entered into a cooperative agreement with the Counties of Adair, Clark, Knox, Schuyler and Scotland to formulate the Public Housing Agency (PHA) for the member counties.

1969

On March 19th the Northeast Missouri Regional Planning Commission was formed.

Journey Starts...

Our fundamental **mission and focus areas** help us in the decision-making processes.

Scope of work varies day to day, but the underlying mission is always the same, making Northeast Missouri a better, safer place to live and grow.



Our Mission

With an eye toward an even better standard of living for all, NEMO RPC/RDC strives to effect positive change through innovative planning, promotion and facilitation of community development and economic growth, focusing on supporting local entrepreneurship, business development and expansion of our economy by focusing on improving infrastructure, making capital available for growth and expansion, highlighting and studying housing and technology needs and advancing educational opportunities. We look forward to working with you to make Northeast Missouri even better.



Focus Areas

Developing a comprehensive plan based on careful studies of resources, issues, needs and possibilities in key focus areas such as economic development, housing, and transportation.



Economic Development

Sustain and grow our region's economy and outstanding quality of life, by providing leadership and resources for business creation, expansion, retention, new business recruitment and community development.



Transportation

Assist our counties and cities with their efforts to identify their public infrastructure issues and options for improvements, including securing funding sources, individually and as a region.



Housing

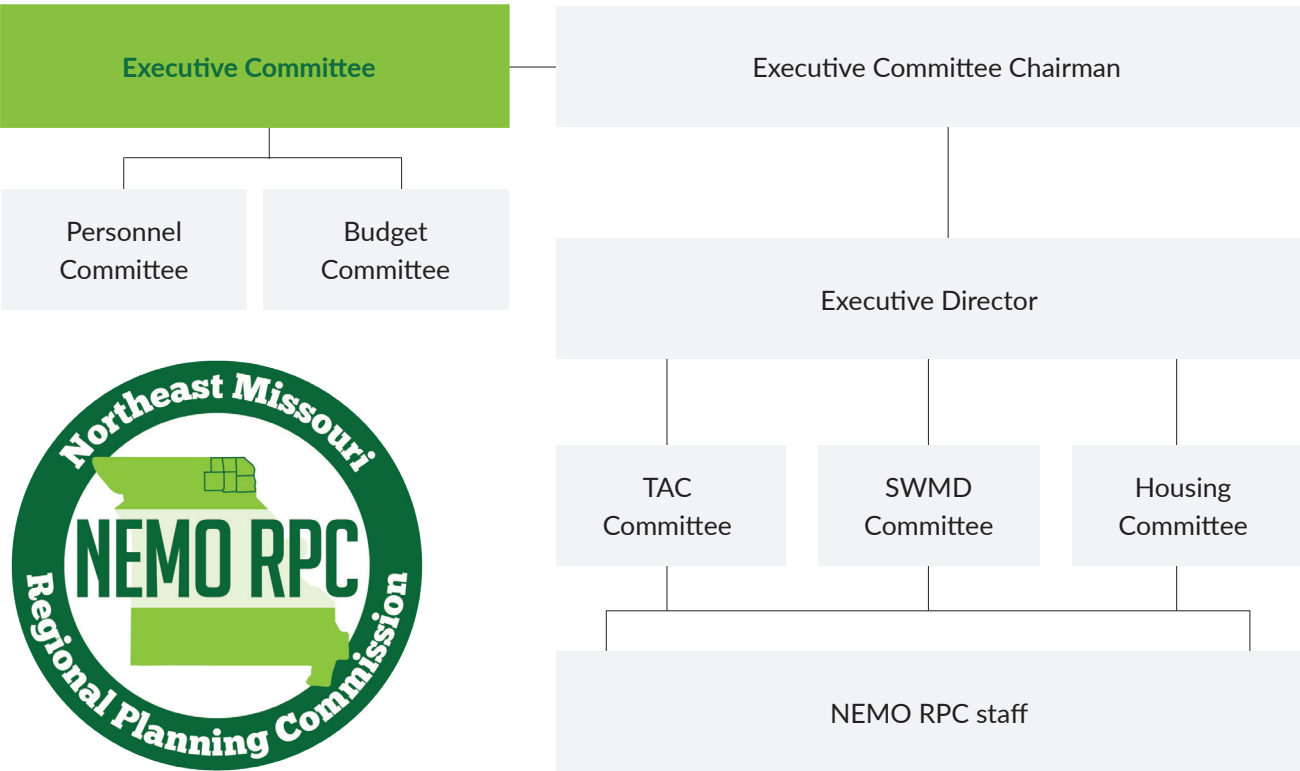
Meet the emerging, affordable housing needs of low to moderate income individuals and families while promoting self-reliance and improving the quality of life of our clients.

Our Vision Statement

To foster regional leadership that comes together to work toward a collective goal of creating an exceptional quality of life for all

How we govern our organization

We have a strong and **effective governance system** through the membership. Responsibility for good governance lies with the executive committee.



Serving on the NEMO RPC/RDC Governing Committee

Representatives

Each county shall be entitled to one representative of the County Court or a designee of such court, and each incorporated city shall be entitled to one representative who shall be a mayor, or a person designated by the mayor.

Terms

Members shall serve for a term of four years. Terms shall be terminated, however, when the representative no longer serves as a member of the County Court or as a mayor, or as the designee of a mayor or court.

Qualifications

Representation requires members are current on annual dues assessments; and attend, at a minimum of one quarterly meeting per year.

Governing committees of the NEMO RPC/RDC

EXECUTIVE OFFICERS

Chairperson

Mari Macomber
City Manager Kirksville

Vice Chairperson

Evan Glasgow
Presiding Commissioner
Knox County

Secretary

Jim Werner
District Commissioner
Schuyler County

Treasurer

Wayne Murphy, Jr.,
Presiding Commissioner
Lewis County

The membership of the Commission/ Corporation consists of local units of governments within the region boundaries. Membership is on a voluntary basis. The members are assessed a membership fee based on population and are assessed on a calendar year. The operating budget is generated through income the commission can collect from program administration of State and Federal programs and contract services. The funds generated from the assessments are used to match the various state and federal programs as well as the State of Missouri Office of Administration's grant for the services performed for the region.

EXECUTIVE COMMITTEE

The Executive Committee consists of 12 voting members of the Corporation/Commission. The chairman, vice-chairman, secretary and treasurer must be members of the Executive Committee. There shall be at least two members on the Executive Committee, who are residents of each county, one a designee of the County Court, and the other member from each county shall be designated by the mayors of all the incorporated cities, towns, and villages to be a voting member of the Corporation/ Commission as elected in caucus held by each of the several cities which comprise the region. The terms of the members of the Executive Committee is three years.

Current Members

Mari Macomber - City of Kirksville
Evan Glasgow - Knox Co.
Jim Werner -Schuyler Co.
Wayne Murphy, Jr. - Lewis Co.
Mark Shahan- Adair Co.
Wayne Blum – City of Kahoka
Paul Brotherton – Clark Co.
Duane Ebeling – Scotland Co.

BUDGET COMMITTEE

There shall be a budget committee composed of five members of the Executive Committee appointed by the chairman of the Executive Committee. No more than one member of this committee shall reside in any county of the region.

Current Members

Evan Glasgow - Knox Co.
Jim Werner -Schuyler Co.
Mark Shahan- Adair Co.
Paul Brotherton – Clark Co.

PERSONNEL COMMITTEE

There shall be a personnel committee composed of three members of the Executive Committee, appointed by the chairman of the Executive Committee, which shall recommend the person who shall serve as Director and shall be charged with screening and recommending all other personnel to be employed as staff members.

Current Members

Mari Macomber - City of Kirksville
Wayne Blum – City of Kahoka
Duane Ebeling – Scotland Co.

We are continually faced by great opportunities brilliantly disguised as insoluble problems.

- Lee Iacocca

Our Elected, Legislative Officials

Where we turn for help at the federal
and state levels.



“Let us never forget that government is ourselves and not an alien power over us. The ultimate rulers of our democracy are not a President and senators and congressmen and government officials, but the voters of this country.”

**Franklin D.
Roosevelt**



Roy Blunt
U.S. Senator

260 Russell Senate Office Building
Washington, D.C. 20510-5721
Ph: 202-224-5721

 hannah_larrick@blunt.senate.gov



Josh Hawley
U.S. Senator

212 Russell Senate Office Building
Washington, D.C. 20510
Ph: 202-224-6154

 ray_bozarth@hawley.senate.gov



Sam Graves
U.S. Representative

1415 Longworth Office Building
Washington, D.C. 20515
Ph: 202-225-7041

 bryan.nichols@mail.house.gov



Cindy O'Laughlin
State Senator

201 W. Capitol Ave. Rm. 226
Jefferson City, MO 65101
Ph: 573-751-7985

 Cindy.O'Laughlin@senate.mo.gov



Danny Busick
State Representative 3rd Dist.

201 W. Capitol Ave. Rm. 115B
Jefferson City, MO 65101
Ph: 573-751-3647

 Danny.Busick@house.mo.gov



Greg Sharpe
State Representative 4th Dist.

201 W. Capitol Ave. Rm. 203C
Jefferson City, MO 65101
Ph: 573-751-3644

 Greg.Sharpe@house.mo.gov

Our Executive Team

A successful company needs a **professional & innovative** team.



Celebrating 40 Years of Service

Sue Morton joined the staff at NEMO RPC back in 1981. She has served in a number of capacities, including financial officer and solid waste district director, and now works as a part-time housing assistant.





Derek Weber
Executive Director

Experience : 4 Years

Contact Info:
660-465-7281 ext. 1
derekweber@nemorpc.org



Teresa Skinner
Financial Officer

Experience : 13 Years

Contact Info:
660-465-7281 ext. 2
teresaskinner@nemorpc.org



Oleva Frederick
Housing Director

Experience : 30 Years

Contact Info:
660-465-7281 ext. 3
olevafrederick@nemorpc.org



Marla Greiner
Community Development
Region C SWMD Manager

Experience : 3 Years

Contact Info:
660-465-7281 ext. 5
marlagreiner@nemorpc.org



Chris Feeney
Transportation Planner
Economic Development

Experience : 2 Years

Contact Info:
660-465-7281 ext. 6
chrisfeeney@nemorpc.org



Kate Felter
Housing Assistant Director

Experience : 1 Year

Contact Info:
660-465-7281 ext. 4
katefelter@nemorpc.org

Member Services

We offer broad range of **innovative services** designed to assist our members.



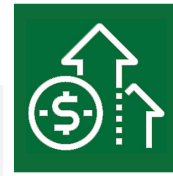
NEMO Solid Waste Management District

- » Promote Recycling
- » Develop and administer the regional Solid Waste Management Plan
- » Administer more than \$2 million in grants to recycle, reduce and reuse solid waste



Hazard Mitigation

- » Establish county-level hazard mitigation plans
- » Plans updated every five years
- » Work with communities on the Hazard Mitigation Grant Program following presidential disaster declarations that impact local communities



Economic Development

- » Promote job creation and work-force development
- » Identify infrastructure needs and promote improvements for business growth
- » Assist communities in applying for CDBG grants and working to administer the projects



Northeast Missouri Revolving Loan Fund

- » Intermediary Relending Program to fill gaps not met by conventional lenders
- » Financing for starting, acquiring, operating or expanding qualifying businesses



Public Housing

- » Section 8 Housing Choice Voucher Program
- » Landlord Housing Assistance Payments Contracts
- » Annual re-examination of family income and composition/ unit inspection to ensure minimum housing quality standards are met.



Transportation Planning

- » Local representation on the Transportation Advisory Council
- » Prioritize Local Transportation Needs with MoDOT
- » Multimodal projects, sidewalks, trails, river ports, rail, airports



How we do work

01

Opportunity

Identify state, federal or private programming that could potentially benefit our members, our citizens, our communities and our region.

02

Communicate

Share these opportunities with our stakeholders to determine potential matches, level of local interest.

03

Engagement

Local officials engage NEMO RPC staff, participating in fact gathering and preparation for studies, needs prioritization or grant applications.

04

Planning

NEMO RPC staff compiles data and local feedback to build a comprehensive plan to address the defined need and produce measurable results.

05

Administration

Successful grants require proper administration, complete documentation and required paperwork, budget reviews, inspections and much more.

Region C

Solid Waste Management District

The NEMO Solid Waste Management District has funded numerous projects since 1993, awarding funds in excess of \$2,000,000 toward recycling efforts in the six-county area of Northeast Missouri.

Projects Awarded FY21

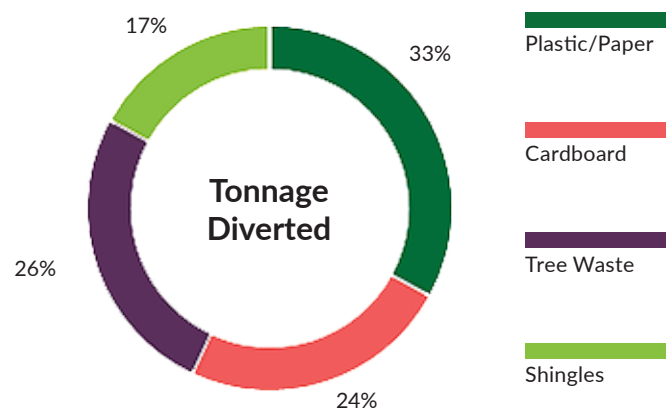
After awarding three projects each in 2019 and 2020, the executive board surpassed that combined total in the current grant call, voting on May 19, 2021 to award \$138,808.08 total for seven area recycling projects with combined project costs of \$191,656.10.

Grantee/Project	Grant Funds	Matching Funds
City of Kirksville - McKinney Park recycled structures	\$6,856.03	\$2,285.35
City of Lancaster - Jaycee Park recycled benches, playground	\$19,979.80	\$7,200.92
City of Memphis - OCC collection vehicle	\$24,060.00	\$8,020.00
Friends of Ewing Community Park - recycled tables, shelter	\$4,000.00	\$2,118.00
Full Circle Forest Products - wood from waste logs	\$23,921.25	\$7,973.73
High Hope Employment Services - horizontal baler	\$25,000.00	\$15,000.00
Victory Metals and Recycling - shingle shredder	\$35,000.00	\$10,250.00
TOTALS	\$138,808.08	\$52,848.02

FY21 grant projects to help divert 700+ tons of waste a year

Region C's main goal is to encourage projects that divert materials from the landfill. The district is interested in supporting any projects developing uses for collected materials.

Landfill Diversion



Nearly 710 tons of waste products are expected to be diverted from landfills because of the FY21 recycling grant projects.

for the year ended 30 June, 2021

Board Approved Grant Activity FY2020-21



One remaining grant from 2018, a pair from 2019 and one from the 2020 cycle were closed out by board votes this year, while a trio of others have been delayed by material shortages and other impacts from COVID-19.

Grant Activity FY2020-21			Year Ended June 2021		
	Action	Retainage %	2020	Action	Open/Closed
Bulldog Biodiesel #2018-002	Board voted to close	15	\$4,275.00	Refunded	Closed
Kirksville Aquatic Center #2019-002	No Action	NA	\$35,000.00	Awaiting Disbursement	Open
Industrial Opportunities (baled) #2019-003	Board voted to close	15	\$4,340.00	Refunded	Closed
Memphis Recycling Enhancement (#2) #2019-004	Board voted to close	15	\$3,675.00	Refunded	Closed
Memphis Recycling Grant #2020-002	Board voted to close	15	\$1,762.50	Refunded	Closed
Industrial Opportunities #2020-004	Board gave 6-month extension	NA	\$24,926.69	Extended	Open
City of Kirksville - Detweiler Park gazebo #2020-005	No action	NA	\$35,000.00	Awaiting disbursement	Open

NEMO Solid Waste Management District C Council Membership

ADAIR COUNTY

Mark Thompson (Chairman),
Mark Shahan, Mari Macomber

KNOX COUNTY

Evan Glasgow, Mark Parrish,
Ronnie Leckbee

SCHUYLER COUNTY

Jim Werner, Jeff Lindquist,
Margaret Reynolds, John March

CLARK COUNTY

Henry Dienst, Buddy Kattelmann,
Jerry Webber

LEWIS COUNTY

Wayne Murphy, Jr. (Secretary),
Deanne Whiston, Dan Steinbach,
John Roach, Wendy Lewis

SCOTLAND COUNTY

David Wiggins (Vice-Chair),
Duane Ebeling, Katie Harris

EXECUTIVE BOARD: Mark Thompson (Chairman), David Wiggins (Vice-Chair), Wayne Murphy, Jr. (Secretary), Henry Dienst, Katie Harris, Jerry Webber, Margaret Reynolds, Jim Werner, Dan Steinbach, Evan Glasgow, Ronnie Leckbee, Mari Macomber

The NEMO Solid Waste District Council membership is set by statutes as two representatives from each county, and one representative from each incorporated community over the population of 500. From the Solid Waste council an Executive Board of Directors is elected consisting of twelve members.

Hazard Mitigation and Disaster Recovery

Hazard mitigation is defined by the Federal Emergency Management Agency (FEMA) as **any action taken to eliminate or reduce the long-term risk to human life and property from hazards and their effects.**

➔ Planning ahead

The Robert T. Stafford Disaster Relief and Emergency Assistance Act provides that each county commission and the city councils within the county will be responsible for adopting a county hazard mitigation plan, a risk-based approach to reducing risks to natural hazards through mitigation planning.

➔ Building a plan

The hazard mitigation planning committee members are responsible for the annual review and update of the plan. The planning committee shall be a standing committee, composed of representatives from various government agencies, county officials, city employees, utility service employees, emergency responders and planners, regional planners and any concerned county residents. It is the responsibility of the legislative bodies of the participating communities to ensure that the planning committee meets regularly, at a minimum - annually.

➔ Updating the plan

Officially updating plans every 5 years, upon SEMA and FEMA approval, allows for jurisdictions to apply for Hazard Mitigation Grant Program, which provides funds following a Presidential disaster declaration.



Hazard mitigation activities may be implemented prior to, during or after an incident.

Hazard Mitigation Plans

The State of Missouri Emergency Management Agency and local agencies such as the Northeast Missouri Regional Planning Commission work with county governments and municipalities to establish hazard mitigation plans, the only phase of emergency management specifically dedicated to breaking the cycle of damage, reconstruction, and repeated damage.

H

Hazards

People and property in Missouri are at risk to a variety of hazards including:

- » tornadoes
- » floods
- » drought
- » earthquakes
- » severe winter weather
- » wildfires...

M

Mitigation

Why mitigation? The time, money and effort to respond to and recover from disasters divert public resources and attention from other important programs. Missouri recognizes the consequences of disasters and the need to reduce their impacts.

C

Current Plans

- » Clark County plan - expires 8/1/2025
- » Lewis County plan - expires 10/1/2023
- » Adair County plan - expires 11/1/2025
- » Knox County plan - expires 4/1/2026
- » Schuyler County plan - expires 6/1/2026
- » Scotland County plan - expires 4/1/2026

G

Grants

Unified Hazard Mitigation Assistance (HMA) Grants

NON-DISASTER GRANTS

(annually funded)

- » Building Resilient Infrastructure & Communities (BRIC)
- » Flood Mitigation Assistance (FMA)

POST-DISASTER GRANTS

- » Hazard Mitigation Grant Program (HMGP)

Economic Development

The Northeast Missouri Regional Planning Commission, as an Economic Development District, **works closely with its member governments** to improve the economy and living environment of the District.



Employment Development

Work with local governments, local economic development organizations and other agencies/interest groups to promote job creation, economic growth and expansion.

Community Development

Reassess the adequacy of community utilities/services and transportation facilities throughout the region to support regional growth and expansion.



Natural Resources/Energy

Assess alternative sources of energy in the region for use in electrical generation, industrial/agricultural production, home heating and transportation.

Environment

Update and implement a Solid Waste Management Plan thru the NEMO Region C Solid Waste Management District.



Comprehensive Economic Development Strategy

NEMO RPC actively updates the **Comprehensive Economic Development Strategy (CEDS)** for the Northeast Missouri Administrative Planning Grant provided by the U.S. Department of Commerce, Economic Development Administration (EDA).

Standard Work Plan Elements

Work as a member of the Missouri Association of Council of Governments (MACOG) to support all economic development efforts and legislation that will enhance the business community and employment base of the State of Missouri.

Distribute information to the region announcing funding and training opportunities and policy changes and development including updating the district's website which is live and accessible at www.nemorpc.org.

Attend national, state-wide, regional and local meetings to assist communities and organizations and develop professional capacity of the organization.

CEDS Identified Goals

NEMO RPC Comprehensive Economic Development Strategy 2019-2024

- **GOAL #1 - General Infrastructure Upgrades**
- **GOAL #2 - Economic and Employment Growth through Business Retention, Expansion and Attraction**
- **GOAL #3 - Community Advancements and Adequacy of Available Services including Broadband**
- **GOAL #4 - Promote Environment, Natural Resources and Alternative Energy**
- **GOAL #5 - Human Resource Development - Increase the number of skilled workers in the Northeast Missouri workforce**

Comprehensive Economic Development Strategy (CEDS)

Simply put, a CEDS is a strategy-driven plan for regional economic development. A CEDS is the result of a regionally-owned planning process designed to build capacity and guide the economic prosperity and resiliency of an area or region. It is a key component in establishing and maintaining a robust economic ecosystem by helping to build regional capacity (through hard and soft infrastructure) that contributes to individual, firm, and community success. The CEDS provides a vehicle for individuals, organizations, local governments, institutes of learning, and private industry to engage in a meaningful conversation and debate about what capacity building efforts would best serve economic development in the region. The CEDS should take into account and, where appropriate, integrate or leverage other regional planning efforts, including the use of other available federal funds, private sector resources, and state support which can advance a region's CEDS goals and objectives. Regions must update their CEDS at least every five years to qualify for EDA assistance under its Public Works and Economic Adjustment Assistance programs. In addition, a CEDS is a prerequisite for designation by EDA as an Economic Development District (EDD).



blown away by new workforce training...

NEMO RPC played a key roll in helping the Adair County Commission secure \$480,688 CDBG funding for the creation of a new electronics lab for a wind technician certification program being created by Moberly Area Community College at its Kirksville campus, with a goal to train 96 students in the first two years.

"I was a part of the review process for this program. It was a great experience. Seeing all the opportunities for this area, for the students — for students to know there are jobs waiting for them when they graduate is just amazing." - Kristie Davis, Director of Moberly Area Community College



“Adair County is excited to partner with MACC to bring this needed training to our area for employers now and in the future. There are many job openings for those with these mechanical/electrical skills, and we would like nothing more than to have a strong pipeline of local people to fill them.”

Mark Shahan, Presiding Commissioner for Adair County.

The NEMO RPC helped secure one of three awards announced by the Missouri Department of Economic Development and the Missouri Department of Higher Education and Workforce Development on October 6th, which provided more than \$1 million in grants and tax credits for three organizations through the Workforce Training Initiative.

A Community Development Block Grant through the Workforce Training Initiative was used by Adair County in partnership with Moberly Area Community College to purchase equipment and offer several classes in Mechatronics and Wind Energy at the Kirksville MACC campus. The program will include intensive hands-on labs and is built around classes that will create cross trained technicians with skills in electrical systems, motor control, safety and quality control, and more.

is particular Workforce Training
the opportunities it is providing
ents to get this type of training and
en they complete that certificate —
of Missouri One Start

Building stronger, more resilient communities



The Community Development Block Grant Program offers funding to help build stronger and more resilient communities.

The CDBG program offers grants to small Missouri communities (incorporated municipalities under 50,000 and counties under 200,000 in population).

From addressing local health and safety concerns to improving local

facilities such as senior centers and community centers, CDBG programs are designed to support your community's wellbeing and greater capacity for growth. Grants are available in a variety of categories and can be utilized for a wide-range of community development initiatives.

CDBG Categories

General Infrastructure

This program helps Missouri communities strengthen its local economy by improving local public infrastructure, streets, drainage, and bridges.

Industrial Infrastructure

This program helps communities develop public infrastructure that allows industries to locate new facilities, expand existing facilities, prevent the closing of a facility or the relocation of a facility outside the state.

Water/Wastewater

Grants to help communities establish or improve local water or sewer systems, funding construction that is related to water treatment and distribution, and sewer treatment and collection for publicly owned systems.

Demolition

Funding demolition of vacant, dilapidated structures (primarily residential) in blighted areas and that present safety hazards.

Workforce Training Initiative

Through the Workforce Training Initiative, DED is making available a combination of CDBG, NAP, and YOP funds to help nonprofit organizations cover the cost of training needs and address gaps in quality job training opportunities throughout the state.

Emergency

Helping communities address conditions that pose a serious and immediate threat to the health and welfare of the community. The need must have developed or greatly intensified within the past 18 months, and be unique in relation to the problem not existing in all other communities within the state.

Disaster Recovery

These grants assist local communities and other entities with long-term recovery, restoration of infrastructure and economic revitalization related to specific Presidentially-declared disasters.

Long-Term Recovery

These funds are used to assist non-entitlement local units of government in addressing emergency housing, public facility, infrastructure, and business assistance needs that occur as a result of natural or manmade disasters.

Mitigation

CDBG Mitigation assistance in areas impacted by recent disasters helps carry out long-term strategic and high-impact activities to ease disaster risks and reduce future losses.

Neighborhood Stabilization

This program helps Missouri communities acquire, rehabilitate, and resell foreclosed homes to income qualifying persons/families.

Community Facilities

This program helps Missouri communities construct facilities that will serve a large portion of the public with a variety of services, with education and health/well-being programs taking priority.

Business Development

CDBG programs help communities aid local businesses, attract new ones, and provide crucial capital to spur entrepreneurship with:

- Action Fund Loan - Cities and counties can apply on the behalf of a small business to help them secure capital after they have exhausted all other sources.
- Interim Financing Loan - Local government can provide a short-term loan to certain types of for-profit companies.
- Microenterprise - Cities and counties can design a revolving loan program to facilitate job creation or retention.

NEMO RPC/RDC

Community Development Block Grants

NEMO RPC/RDC has a proud history of successfully applying for, and efficiently administering through completion, a long line of CDBG projects that have helped our member communities become stronger and more resilient.

Projects Awarded FY21

NEMO RPC authored and is administering a CDBG grant on behalf of the Adair County Commission, securing \$480,688 in funding for the creation of a new electronics lab for a wind technician certification program being created by Moberly Area Community College at its Kirksville campus.

Grantee/Project	Grant Funds	Total Cost of project
Lewis County Bridge Replacement Grant (FY2018)	\$280,288	\$518,928
City of LaBelle Demolition Grant (FY2019)	\$151,040	\$172,380
Village of Rutledge Demolition Grant (FY2016)	\$96,450	\$119,090
City of Brashear Wastewater System Upgrade (FY2017)	\$150,000	\$1,295,000
Lewistown Wastewater System Upgrades (FY2015)	\$500,000	\$1,504,000
Scotland County Bridge Replacement Grant (FY2016)	\$124,400	\$436,300

NEMO RPC has worked on nearly 200 CDBG projects totalling more than \$55.4 million in aid

ADAIR COUNTY

38 projects - \$12.64 Million

CLARK COUNTY

33 projects - \$8.9 million

KNOX COUNTY

24 projects - \$6.0 million

LEWIS COUNTY

46 projects - \$14.9 million

SCHUYLER COUNTY

32 projects - \$6.9 million

SCOTLAND COUNTY

25 projects - \$5.9 million





NEMO RPC

Revolving Loan Fund Program



Opportunity

NEMO RPC continues to assist businesses and industries in the creation of new jobs and the retention of existing jobs for Northeast Missouri through the Northeast Missouri Revolving Loan Fund (RLF). NEMO RPC, in partnership with USDA-Rural Development established the program in 2004 to fill financing gaps not covered by conventional lenders.



Eligibility

Applicants may be individuals, public or private organizations, or other legal entities, with authority to incur the debt and carry out the purpose of the loan. The business must be located in one of the counties of Adair, Clark, Knox, Lewis, Schuyler and Scotland in Northeast Missouri.



Uses

Funds must be used for various costs associated with starting, acquiring, operating or expanding qualifying businesses, such as but not limited to:

- Business construction, expansion, repair, modernization or development;
- Purchase/development of land, buildings, machinery, or supplies;
- Start-up costs and working capital;
- Pollution control and abatement;
- Refinancing construction financing

SCPHA

Scotland County Public Housing Agency



Background

Oleva Frederick - Director
olevafrederick@nemorpc.org
660-465-7281 Ext. 3

Kate Felter - Ast. Director
Clark and Knox counties
katefelter@nemorpc.org
660-727-2013 (Kahoka)
660-397-2394 (Edina)

Sue Morton
Adair and Schuyler counties
suemorton@nemorpc.org
660-665-4615

The Scotland County Public Housing Agency (SCPHA) administers Housing Choice Vouchers for U.S. Department of Housing and Urban Development in Adair (excluding the City of Kirksville), Clark, Knox, Schuyler and Scotland Counties. SCPHA has 329 vouchers available monthly for assistance.

The rules and regulations of the Section 8 Housing Programs are determined by the U.S. Department of Housing and Urban Development (HUD). The Scotland County Public Housing Agency (SCPHA) sets policies, procedures and requirements for tenant selection, inspections, and terminations based on those regulations.

The Section 8 Housing Choice Voucher Program is designed for low-income families who wish to live in homes, apartments or mobile homes in the private rental market, but who cannot afford market rental rates.

Program Details

The primary objectives of the Section 8 Housing Choice Voucher Program are: to assist families in finding affordable housing; to ensure that the unit meets Housing Quality Standards; to assist families with rental payments.

- ➔ In the past 12 months, SCPHA received \$854,000 in funding from HUD to assist clients.
- ➔ SCPHA distributed \$797,400 in rental assistance to landlords in the past 12 months.
- ➔ During the completed fiscal year, SCPHA distributed \$78,884 in utility assistance payments for clients.
- ➔ SCPHA assisted 364 families in the completed fiscal year, accounting for 3,124 months of rental housing payments for these families.



The mission of the Scotland County Public Housing Agency is to meet the emerging, affordable housing needs of low to moderate income individuals and families while promoting self-reliance and improving their quality of life.

Housing shortage

SCPHA is always looking for additional rental properties to enroll in the Section 8 program.



\$290.31
average monthly
rental assistance
payment

Property owner receives a monthly housing assistance payment (HAP) directly from SCPHA.



40+
Renters looking
for apartments

With more clients than available rentals, SCPHA is always looking for more housing opportunities.

Keeping our transportation system safe and reliable



MoDOT is committed to **working with local officials, citizens and stakeholders** to help determine the right transportation solutions for their communities.

One of the key roles of the NEMO RPC is our partnership with the Missouri Department of Transportation, a working relationship that dates back to the early 1990s with the implementation of the federal Intermodal Surface Transportation Efficiency Act, which expanded the

transportation planning process to now include a broad range of voices including city and county elected officials, business and industry leaders as well as at-large members of the public. All of this comes together in the form of the Transportation Advisory Council (TAC).



Creating Results

MoDOT includes planning partners, transportation stakeholders and the general public in the process to identify the highest priority needs and improvements state wide and in each district. This process, referred to as the Planning Framework, relies on the right people being involved in discussing and evaluating needs and then making decisions on those needs that should move forward for more detailed evaluation as potential projects.

Because Missouri has significantly more transportation needs than funds available, the Planning Framework helps determine which priorities should receive the limited available funding each year.

In 2020 the NEMO TAC prioritized 35 top transportation needs in its six counties. When the 2022-2026 STIP was released by MoDOT, 12 of the 35 needs had been programmed for completion with engineering set to begin on several others.

Raising the Road at Alexandria

The public planning partnership with MoDOT is creating results. The NEMO RPC #1 priority has finally been programmed in the 2022-26 STIP. Raising the Road at Alexandria has been added to the 2022-26 STIP; \$100,000 for Right of Way work in FY21-22; \$40,000 in engineering in FY21-22 and FY22-23; \$318,000 engineering in FY 23-24 + \$4,758,000 for construction.

School Turning Lanes

Knox County School MO Route 6, Highland School MO Route 6 (the #2 and #4 ranked TAC priorities) are being considered for upgrades, as MoDOT has offered to each school, upon consolidation of the multiple entrances into one location, making them one-way (a safety strategy known as access management), construction of a turn lane when the next overlay project is completed on Route 6 near the schools.

Bridge Replacements

Six bridges have been programmed for replacement and two others have moved into scoping, checking off a total of eight high priority projects on the 2020 needs list. The FARM program award will replace bridges that were the #6, #8, #16 and #20 ranked TAC priorities. NEMO RPC had 13 bridges included in the FARM award. Four were ranked as priority needs by the NEMO RPC – LEWIS CO. Route E Sugar Creek; ADAIR CO. Route 11 Floyd Creek; LEWIS CO. Route J Big Grassy Creek; LEWIS CO. Route E Derrah's Branch.

Highway 15

Resurfacing of Highway 15, including the addition of 2-foot shoulders and rumblestrips began in 2020, completing the stretch from the Iowa state line to Memphis. During the summer of 2021, the process continued southward, completing the stretch between Memphis and Edina with a one-inch overlay, two-foot shoulders, rumblestrips and ADA sidewalk work in Edina at a cost of \$2.65 million. Similar work has been planned for the fall of 2021 to upgrade Highway 15 from Edina south to Shelbyville. The resurfacing, safety upgrades and ADA sidewalk work in the communities along the route is expected to cost \$5.4 million.

Highway 63/Baltimore Street

Work began this spring on Baltimore Street in Kirksville consisting of resurfacing, American with Disabilities (ADA) and drainage improvements from just north of Illinois Street to just south of Patterson Street. The project cost is \$4,940,992.78 with the City of Kirksville contributing \$111,251.20 for the addition of some sidewalk in the project area.

The City of Kirksville will also contribute \$955,294 as part of the 50/50 Governor's Cost Share Program for the addition of a turn lane on North Baltimore between Highway 6 and West Brewington planned for this fall or next summer.

Missouri's current road and bridge program is focused on keeping our transportation system in its current condition with limited funds available to address larger system improvements.

2021 MoDOT High Priority Unfunded Needs

MoDOT staff worked with Metropolitan Planning Organizations and Regional Planning Commissions throughout the state to develop a list of unfunded road and bridge needs, targeting a total of \$2.5 billion in two tiers. Tier one includes \$540 million and includes projects that could be accomplished in the time of the current STIP if MoDOT received more funding. Tier two is worth \$2.2 billion and includes projects beyond the current STIP timeframe with broader estimates. The assumed district distribution was based on the Missouri Highways and Transportation Commission's (MHTC) Flexible Funding formula. A third tier worth approximately \$2 billion and multimodal needs was to be added later in 2021.

Tier I - Unfunded Road and Bridge Needs - 2021

District	County	Route	Project Description	Estimated Funding Needed (\$1,000)*	Citizen's Guide Unfunded Needs Category
Northeast	Adair, Macon, Randolph, Schuyler	149, K, BB, A, K, Y	Improve pavement conditions on minor routes and low volumes throughout the Northeast District.	\$8,000	Improve Road Condition
Northeast	Adair, Audrain, Knox, Montgomery	V, C, F, K	Improve bridge conditions and widen bridges throughout the Northeast District.	\$3,000	Improve Bridge Condition
Northeast	Montgomery Shelby/Marion Lincoln	19, 168, 47	Pave shoulders at various locations throughout the Northeast District.	\$5,000	Improve Road Condition
Northeast	Montgomery	161	Bridge improvement and widening over Elkhorn Creek 1.6 miles south of Rte. CC near Buell. Project involves bridge S0368.	\$900	Improve Bridge Condition
Northeast	Ralls	19	Turn lanes at Mark Twain Schools near Center	\$700	Increase economic growth and improve safety
Northeast	Macon	63/36	Improve interchange at Macon	\$3,000	Increase economic growth and improve safety
Northeast	Audrain, Ralls, Pike	54	Study for updated scope & estimate for shared 4-lane from Mexico to Louisiana	\$1,000	Increase economic growth and improve safety
Northeast	Montgomery	I-70	Updated study for RR overpass near High Hill	\$2,000	Increase economic growth and improve safety



The NEMO RPC's six counties have a combined **25 construction projects** included in the 2022-2026 STIP totalling nearly **\$53 million** in funding.

MoDOT STIP 2022-2026 NEMO RPC



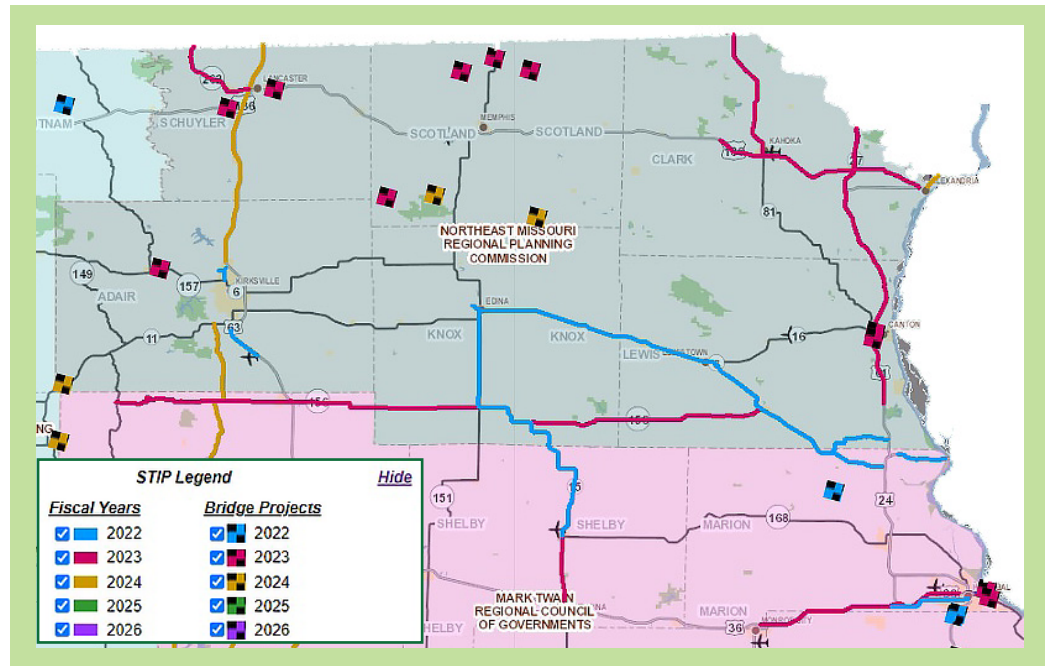
25
Projects



12
Bridges



\$53 million
State Funding



Low Volume Road Pavement Condition

36% GOOD
Schuyler County

41% GOOD
Clark County

49% GOOD
Scotland County
based on latest 2019 Data

Asset Management

Faced with declining low volume road conditions in northern Missouri, MoDOT budgeted an additional \$15 million in 2022 and 2023 and \$12.5 million in 2024 to a new maintenance asset management deficit program.

MoDOT also is proposing a new SB 262 Condition Deficit program to add an additional \$15 million a year over the next three years to specifically address deficit areas such as found in the NEMO RPC.

MoDOT indicated 67% of the new money will go to north Missouri, where the conditions are the worst in the Northwest and Northeast districts.

MoDOT noted these measures represent the first time the department has directed allocations targeting outcome, results after the fact, to come back and correct deficiencies, such as those in the NEMO RPC counties.

Northeast Missouri TAC members testify at Missouri Highway Commission meeting



TAC vice-chair Mari Macomber opened the presentation, announcing to the Commission an enhanced sense of engagement being generated by the current TAC membership, which has become more educated and informed on the transportation needs of the region, and is more willing to make the efforts such as this, to share that information with the state's leadership.

Background

While funding from the construction program pays for pavement improvements for heavily travelled roads, like interstates and U.S. highways, lettered routes in less populated areas rely on operations funds to maintain these low volume roads, competing for funding with snow removal, mowing, repairs, striping, staffing...

Representatives from the Northeast Missouri Regional Planning Commission took the podium at the August 4th meeting of the Missouri Highway and Transportation Commission to address regional transportation issues, in particular, low volume roads. NEMO RPC Executive Director Derek Weber thanked the MHTC and MoDOT for work planned to try to remedy some of the poor pavement conditions on low volume lettered routes in this corner of the state.

“But because those efforts were necessary, we would like to start a conversation with hopes of improving options planning partners such as ourselves have to ensure lagging low volume road conditions can be adequately prioritized in areas of need,” Weber told the commissioners. “Part of that conversation involves asking the question, could MoDOT and the state benefit from establishing a separate, dedicated funding formula/category for low volume roads? Right now, low volume roads appear a lot like the runt of the litter, finding it very difficult to wrestle with all of the other bigger, more important funding needs, and it feels like they are at risk of being squeezed out.”

Low Volume Roads

Low volume roads are the bottom rung of the state transportation ladder, below major and minor routes with higher traffic volumes. The state targets 90% good rating for major routes with an International Roughness (IRI) score of 100 or less qualifying as good; 80% good for minor routes with an IRI of 140 or less as good; and just 70% good and an IRI of 170 or less to be good for low volume roads.

- ➔ With more than 11,000 miles of low volume roads (under 400 average daily traffic), more than 30% of the state highway system falls into this category.
- ➔ The issue is even more important in northern Missouri, where the northeast and northwest districts are home to 46% of all of the state's low volume routes.



“Much of what we do, starts at the local level, the grassroots, and a planning commission like yours, pushing those priorities up, is the key. You are doing the right thing, being here, talking about this. A lot of folks in the room are tired of hearing us preach about low volume roads, but I’ll tell you we are going to keep looking at it, we are going to keep working on it. We have made it a priority to look at, but there is more to be done there. If planning commissions like yours continue to push it up from the bottom and we can work at it from the top, we’re going to get there.”

MHTC Chairman Tom Waters

Inequity

Every county likely can share photos of bad pavement on a low volume road or two, as there simply isn't enough money to go around to fix them all. However, the 2019 data clearly highlighted some inequities in the low volume pavement quality from region to region and from county to county. 2019 numbers showed 1,306 lane miles of poor rated low volume roads in the Northeast District, including 772 lane miles alone in the NEMO RPC's six counties of Adair, Clark, Knox, Lewis, Scotland and Schuyler. It isn't necessarily an issue of what part of the state you call home, as some of the biggest gaps can be found within the same district. Take the northeast district for instance, where the 2019 data showed Monroe County with 91% of its 346 miles of low volume roads in good condition, while just 36% of Schuyler County's 240 miles of low volume roads were rated good.

NEMO RPC TAC

Transportation Advisory Council

MoDOT consults with regional planning commissions, like the NEMO RPC, on substantive changes to the Long Range Transportation Plan (LRTP) and other statewide transportation plans and programs as required by law. Transportation planning and needs identification are done in collaboration with RPCs. Each RPC has a Transportation Advisory Committee (TAC) which meets on a regular basis to discuss transportation issues and identify needs within their respective areas. These TACs are comprised of elected officials, city and county staff, and MoDOT representatives. MoDOT and RPCs determine which high priority transportation needs should be funded for improvements. Project selection considers not only the priority list, but also the amounts of available funding and type of funding available (fiscal constraint), project timing and coordination with other projects, and opportunities to obtain funding from other sources, such as federal discretionary funding or cost sharing with another agency or entity. The improvements that are selected for funding are included in MoDOT's five-year Statewide Transportation Improvement Program (STIP).

The Northeast Missouri Regional Transportation Advisory Council (TAC) consists 18 members representing county and city government, business leaders and citizens. There are three (3) members in each county and they are appointed by the resident County Commission.

The 2020-21 NEMO RPC TAC members are:

ADAIR COUNTY

Mark Shahan (county)
Mari Macomber (municipalities)
Harold Osborn (at-large)

LEWIS COUNTY

Wayne Murphy Jr. (county)
Deanne Whiston (municipalities)
Travis Flee (at-large)

CLARK COUNTY

Buddy Kattelmann (county)
Wayne Blum (municipalities)
Henry Dienst (at-large)

SCHUYLER COUNTY

Jim Werner (county)
Vacant (municipalities)
Jeff Linquist (at-large)

KNOX COUNTY

Evan Glasgow (county)
Alexandra Reel (municipalities)
Ronnie Leckbee (at-large)

SCOTLAND COUNTY

Duane Ebeling (county)
Jenny Aldridge (municipalities)
David Wiggins (at-large)



ASSOCIATE MEMBERS

An annual associate membership to the NEM RPC/RDC costs \$250 and includes the opportunity to share your company information in the annual report that is updated every October. It also includes the opportunity to become acquainted with the full membership at NEMO RPC meetings, and the ability to share your company information through the NEMO RPC website www.nemorpc.org.



Ameren Missouri

PO Box 790098
St. Louis, MO 63179-0098

Ameren

Phone: 800.552.7583 or 877.426.3736

www.ameren.com/missouri



Northeast Power

P.O. Box 191
Palmyra, MO 63461
573-769-8215

www.northeast-power.coop



ALLSTATE
CONSULTANTS

Allstate Consultants PC

3312 LeMone
Ind. Blvd.
Columbia, MO 65201

www.allstateconsultants.net



804 E. Patton St. Macon, MO 63552
Phone 660.395.4693

email - info@howecompany.com

www.howecompany.com



Lewis County REC

18256 MO-16,
Lewistown, MO 63452
Phone: (573) 215-4000

® or Toll Free: 888-454-4485
www.lewiscountyrec.org



MECO
ENGINEERING CO., INC.

3120 Palmyra Road Hannibal, MO 63401

Phone 573.221.4048

offices in Jefferson City; Branson; Pittsfield, IL; and
Springfield, IL



M^cCLURE

McClure Engineering Co.

www.mcclureeng.com

1360 NW 121st
Clive, IA 50325



Tri-County Electric Co-op

16894 US Hwy 63
P.O. Box 159

Lancaster MO 63548

660-457-3733 or Toll Free: 888-457-3734

www.tricountyelectric.org

Overview

Financial Review 2021

The NEMO RPC/RDC financial position grew stronger in 2021 with total assets increasing from \$719,717 to \$830,966.

The Rural Development operating fund grew from \$194,347 to \$272,408 while the RPC operating fund expanded from \$190,450 to \$207,288.

The RDC-Brashear Rentals fund went from \$75,060 to \$87,615 and the combined investment portfolio grew from \$259,560 to \$263,475.

Operating Accounts

Operating fund balances grew **18.9%** in 2021

Total Fund Balance

13.4% increase from 2020 in ending fund balance

1.5% from last year

+\$3,915 

Investment growth

14.3% from last year

+\$12,555 

Brashear Rentals

28.7% from last year



Rural Development Corporation

+\$78,061
Increased

The RDC ending balance grew from \$194,347 to \$272,408.

13.4% from last year



Overall Fund Balance
+\$111,249
Increased

Total assets grew from \$719,717 in 2020 to \$830,966 in 2021.



Strengthening the bottom line!

for the year ended 30 June, 2021.

Combined Balance Sheet (unaudited)Assets

Operating Accounts

Rural Development Corporation	\$ 272,408
RDC-Brashear Rentals	87,615
Regional Planning Commission	<u>\$ 207,288</u>

Total Operating Accounts	\$ 567,311
---------------------------------	-------------------

Investments

Regional Planning Commission C.D.	<u>263,475</u>
-----------------------------------	----------------

Total Investments	\$263,475
--------------------------	------------------

Receivables

Rural Development Corporation	\$ -0-
Regional Planning Commission	<u>180</u>

Total Receivables	\$ 180
--------------------------	---------------

Total Assets	\$ 830,966
---------------------	-------------------

Liabilities

Rural Development Corporation	\$ 15,200
Regional Planning Commission	<u>-0-</u>
Total Liabilities	\$ 15,200

Fund Balance

Rural Development Corporation	\$ 344,823
Regional Planning Commission	<u>\$ 470,943</u>
Total Fund Balance	\$ 815,766

Total Liabilities & Fund Balance	\$ 830,966
---	-------------------

County Government

County Commissions

The state of Missouri has 114 county governments. With the exception of St. Louis, St. Charles, Jefferson and Jackson Counties (who operate under a charter, “home rule” form of government), the other 110 counties governing bodies are composed of three commissioners – a presiding commissioner and two associate commissioners. Associate commissioners must reside in the district within their county in which they are elected to serve, while the presiding commissioner is elected at large by the entire county.

Meetings

**Mondays, Tuesdays,
and Wednesdays**

CLARK COUNTY

Presiding Commissioner: Buddy Kattelman
Eastern District Commissioner: Henry Dienst
Western District Commissioner: Joe Humes
County Clerk- Kelly Waples 660-727-3283
Email: clark@sos.mo.gov

Meetings

**Tuesdays and
Thursdays**

Meetings

**Mondays and
Fridays**

LEWIS COUNTY

Presiding Commissioner: Wayne Murphy, Jr.
Northern District Commissioner: Deanne Whiston
Southern District Commissioner: Travis Fleece
County Clerk - Shannon Sapp 573-767-5205
Email: lewis@sos.mo.gov

Meetings

Mondays

Meetings

Mondays

SCHUYLER COUNTY

Presiding Commissioner: Rodney Cooper
Northern District Commissioner: Jim Werner
Southern District Commissioner: Jeff Lindquist
County Clerk- Bree Shaw 660-956-9078
Email: schuyler@sos.mo.gov

SCOTLAND COUNTY

Presiding Commissioner: Duane Ebeling
Eastern District Commissioner: Brent Rockhold
Western District Commissioner: David Wiggins
County Clerk- Batina Dodge 660-465-7027
Email: scotland@sos.mo.gov

Meetings

**Tuesdays and
Wednesdays**

ADAIR COUNTY

Presiding Commission - Mark Shahan
1st District Commissioner - William “Bill” King
2nd District Commissioner - Mark Thompson
County Clerk - Sandy Collop 660-665-3350
email: scollop@adaircomo.com



The six counties

Schuyler County

Population

4,660

P.O Box 187
Lancaster, MO 63548
660-956-9078

Scotland County

Population

4,902

117 S. Market St.
Suite 100
Memphis, MO 63555
660-465-7027

Clark County

Population

6,797

111 East Court St.
Suite 110
Kahoka, Mo 63445
660-727-3283

of TRUE Northeast Missouri.

Adair County

Population

25,343

106 W. Washington St.
Kirksville, MO 63501
660-665-2283

Knox County

Population

3,959

107 N. Fourth St.
Edina, MO 63537
660-397-2688

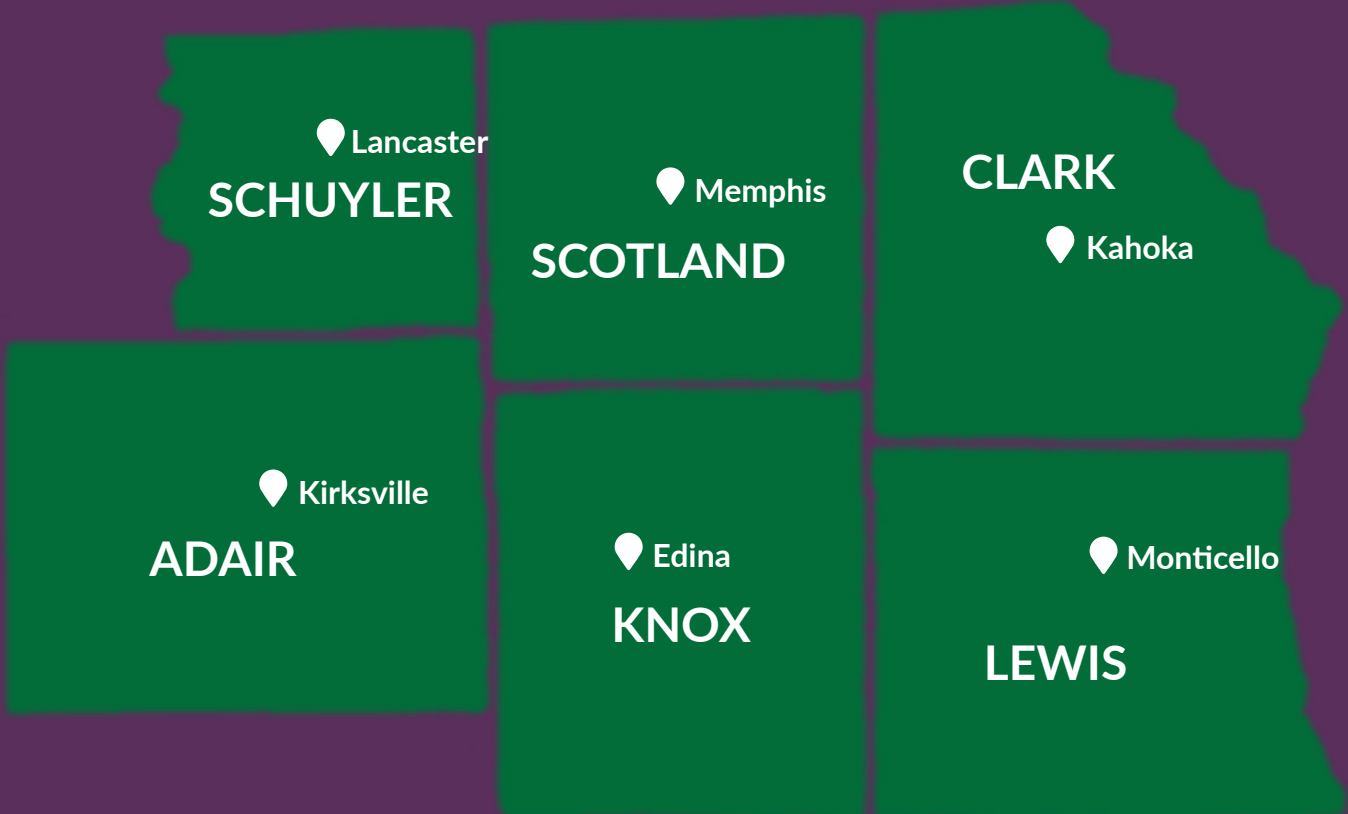
Lewis County

Population

9,776

100 E. Lafayette
P.O. Box 67
Monticello, MO 63457
573-767-5476

Population estimates, July 1, 2019 - U.S. Census)



Municipal Government

NEMO RPC represents the **33 incorporated cities and villages** in Adair, Clark, Knox, Lewis, Schuyler and Scotland counties.

ADAIR COUNTY
ADAIR COUNTY
ADAIR COUNTY



City of Kirksville
www.kirksvillemo.com

- Population 17,554
- 201 S. Franklin Kirksville, MO 63501
- Ph: 660-627-1225 / Fax: 660-665-0940
- City Manager - Mari Macomber
mmacomber@kirksvillemo.com
- Mayor - Zac Burden / Mayor Pro Tem - Jessica Parks / City Council - Rick Steele, John Gardner, Jennifer Walston
- Meeting Dates: 1st & 3rd Mon. 6 p.m.
- City Clerk - Wanda J. Cagle
wcagle@kirksvillemo.com



City of Brashear

- Population 152
- P.O. Box 221 / 105 E. Main
Brashear, MO 63533
- Phone 660-323-5575
- Mayor - Rob Mayfield /
Aldermen - Scott Niver, Eddy
Stewart, Matt McKim, Chelsey
Johnson
- Meeting Dates - 2nd Tuesday
- City Clerk - Angie McKim
citybrsh@marktwain.net



**Village of
Gibbs**

- Population 87
- 305 Chicago Ave. Gibbs,
MO 63540
- Phone 660-998-1902
- Mayor - Pam Pflum /
Trustees - Cheryl Walker,
Burton Keller, Brandy
Pflum, Larry Edwards
- Meeting Dates - 2nd
Monday
- City Clerk - Cheryl Walker



**Village of
Millard**

- Population 74
- P.O. Box 6 / Kirksville, MO
63501
- Phone 660-665-2067
- Mayor - Felicia Scott /
Trustees - Amy Forquer,
Tena Yadon, Tim Scott
- Meeting Dates - 2nd
Thursday
- City Clerk - Maggie Ferrell
mferrell1950@yahoo.com



City of Novinger
www.cityofnovinger.com

- Population 377
- P.O. Box 277 Novinger, MO
63559
- Phone 660-488-5383
Cell 660-216-9926
- Mayor - Jeff Dodson / Alder-
men - Janice Pearce, Matthew
Davis, Derrell Kimball
- Meeting Dates - 3rd Monday
- City Clerk - Lisa Rhoads
cityofnovinger@gmail.com

The intent of the regional planning commission is **to assist member entities** in coordinating the needs of the area with state and federal agencies or with private companies or other public bodies.

CLARK COUNTY

CLARK COUNTY

CLARK COUNTY



City of Kahoka

- Population 2,160
- City Hall - 250 North Morgan St. Kahoka, MO 63445
- Phone 660-727-3711
Fax: 660-727-3750
- Mayor - Jerry Webber / City Council - Jerry Malone, Larry Young, John Gaus, Les Billings
- Meeting Dates: 2nd Monday
- City Clerk - Sandie Hopp
cityofkahoka@kahoka.com



City of Alexandria

- Population 93
- P.O. Box 147
Alexandria, MO 63430
- Ph: 660-754-6315
- Mayor - Ronald Gates / City Council - Barbara Cowell, Jeri Baker, Russell Gates, Justin Stice
- Meeting Date: 2nd Wednesday
- City Clerk - Cindy Cowell



Village of Luray

- Population 73
- 21438 Lusley St.
Luray, MO 63453
- Phone 319-795-6437
- Mayor - Edward Nye
Trustees - Ronald Busby, Carolyn McClintock, Elizabeth Summers, William Pennington
- Meeting Date - 1st Wednesday
- City Clerk - Chelsi Nye
lurayvillage@yahoo.com



City of Revere

- P.O. Box 86
Revere, MO 63465
- Phone 660-948-2950
- Mayor - Josh Taylor / Aldermen - James Engles, Norma Rye, Dale Clark, Misty Boone
- Meeting Dates - 3rd Thursday
- City Clerk - Moriah Taylor
cityofreveremo@gmail.com



City of Wayland

- Population 595
- P.O. Box 282
Wayland, MO 63472
- Phone 660-754-6132
Fax 660-754-5732
- Mayor - Rick Jenkins
Aldermen - Joe Booth, Sherry Bunker, Connie Handyside, Shirley Bunker
- Meeting Dates - 1st Monday
- City Clerk - Kathy Alvis
waylan01@centurytel.net



City of Wyaconda

- Population 139
- P.O. Box 258 / 25804 Main
Wyaconda, MO 63474
- Phone 660-479-5611
Fax 660-479-5641
- Mayor Pro Tem - Mike Pryor
Aldermen - Jim Hooper, Mike Pryor, Tammy Hammond
- Meeting Dates - 2nd Tuesday
- City Clerk - Laura Hines
cityofwyaconda13@yahoo.net

The Missouri state statutes classify municipalities on the basis of population and limit the form of government options of each classification.

KNOX COUNTY

KNOX COUNTY

KNOX COUNTY

E City of Edina

- Population 1,236
- 204 E. Monticello St.
Edina, MO 63537
- Phone 660-397-3251
Fax 660-397-2628
- Mayor - Alex Reel / City
Council - Dot Kriegshauser,
Delmar Strange, David Bugh,
Rick Yoakum, Staci Rimer,
Mark Parrish
- Meeting Dates: 2nd Monday
- City Clerk - Margaret Gibson
- edinacty@marktwain.net

B City of Baring

- Population 104
- City of Baring - P.O. Box 2
Baring, MO 63531
- Phone 660-342-4411
- Mayor - Tony Snelling
City Council - Leanna Holdren,
Debbie McCurren, David
Poston, Teresa Hunolt
- Meeting Dates: 2nd Tuesday
- City Clerk - Tara Lowe
- cityofbaring@gmail.com

H City of Hurdland

- Population 157
- P.O. Box 66 / N. Main
Hurdland, MO 63547
- Phone 660-423-5272
Fax 660-434-5141
- Mayor - Kris McCarty
- Aldermen- Billy Whiles,
Thomas Boatman, Barry
Schrage, Hayden Hunziker
- Meeting Dates - 1st Tuesday
- City Clerk - Julie Green
jgreencva@yahoo.com

K City of Knox City

- Population 266
- P.O. Box 45/ 108 E. Main St.
Knox City, MO 63446
- Phone 660-434-5366
- Mayor - Larry Edwards
Aldermen - Giovanna
Klocke, Santana Shultz, Ron
Shumaker, Kathy Edwards
- Meeting Dates - 1st Tuesday
- City Clerk - Amanda Frost
knoxcityhall@marktwain.net

N Village of Newark

- Population 77
- P.O. Box 76 / 105 N. Main St.
Newark, MO 63458
- Phone 660-733-5658
- Fax 660-733-5687
- Mayor - Meg Glover / Trus-
tees - Helen Petersen, Joan
Hawkins, Dortha Benner
- Meeting Dates - 1st Wednes-
day
- City Clerk - Rita Lindsey

N Village of Novelty

- Population 132
- P.O. Box 26
Novelty, MO 63460
- Phone 660-739-4511
- Mayor - Jason Violette /
Trustees - Jerry Lincoln, Tom
Bailey, Kent Franke, Derick
Groseclose
- Meeting Dates - 2nd Thurs-
day
- City Clerk - Rex Franke
cityofnovelty@yahoo.com

The Missouri statutes provide that a community may incorporate as a city of the third class, fourth class or village **on the basis of the population at the time of incorporation.**



LEWIS COUNTY

LEWIS COUNTY

LEWIS COUNTY

M City of Monticello

- Population 100
- P.O. Box 26
Monticello, MO 63457
- Phone 573-767-5383
- Mayor - Vancell Scifres /
Aldermen - Alan Caudill, Tim
Grgurich, Tom Darnell, Shawn
Burchett
- Meeting Date - 1st Tuesday
- City Clerk - Cindy Grgurich
villageofmonticello@yahoo.
com

C City of Canton www.showmecanton.com

- Population 2,774
- P.O. Box 231 / 400 Lewis St.
Canton, MO 63435
- Phone 573-288-4413
Fax 573-288-3738
- Mayor - Jarrod Phillips /
Council - Jeff Janney, Robin
Bracey, George Hausdorf, Dan
Steinbeck, Patti Mathieson,
Sharon Upchurch
- Meeting Date: 3rd Monday
- City Clerk - Christina Seangmany
cantoncyclyclerk@centurytel.net

E City of Ewing

- Population 393
- P.O. Box 346 / 102 S. Gilead
St. Ewing, MO 63440
- Phone 573-494-3497
- Mayor - Dean Wagy / City
Council - Alan Toliver, Cliff
Wade, Simon Thrower
- Meeting Date: 2nd Tuesday
- City Clerk - Cheryl Thrower
ewingcity@marktwain.net

L City of La Belle

- Population 723
- P.O. Box 51
LaBelle, MO 63447
- Phone 660-213-3830
- Fax: 660-213-3835
- Mayor - Scott Hoffman
Council- Christopher Parrish,
Roy Lewis Sr., Beverly Rob-
erts, Sindy Doscher, Robbie
Walter, Linda Goodson
- Meeting Date - 2nd Monday
- City Clerk - Wendy Lewis
lab@martktwain.net

L City of LaGrange

- Population 957
- 118 S. Main St.
LaGrange, MO 63448
- Ph: 573-655-4301
Fax: 573-655-4930
- City Administrator - John Roach
- Mayor - Robert Corbin
Aldermen - Barry Pfister,
Doug Lewis, Donald Zahn, Gail
Sneeden-Kindhart, Carol Henze
- Meeting Dates - 2nd, 4th Mondays
- City Clerk - Kim Schneider
lagclerk@cityoflagrangemo.gov

L City of Lewistown

- Population 675
- P.O. Box 267
Lewistown, MO 63452
- Phone 573-215-2582
- Mayor - Steve McKenzie
Aldermen - Aaron Lay, Wes
Sharpe, Jeffery Huebotter,
Bill Geisendorfer
- Meeting Date - 1st Monday
- City Clerk - Shirley Hetzler
lewcity@marktwain.net

Once a community is incorporated under a given classification, **the municipality does not automatically change classifications with a gain or loss of population.**

SCHUYLER COUNTY
SCHUYLER COUNTY
SCHUYLER COUNTY

A municipality may **change classification from city to village**, or vice versa only when the change is approved by a majority vote of the people.



City of Lancaster

www.lancastermo.com

- Population 810
- PO Box 477 / 209 East Washington St.
Lancaster, MO 63548
- Phone 660-457-3022
Fax 660-457-3455
- Mayor - Jim Foster / City Council - Kevin Buckallew, Paul Reynolds, John West, Tommy Roberts
- Meeting Date: 2nd Monday 7:00 p.m.
- City Clerk - Margaret Reynolds
cityhall@marktwain.net



City of Downing

- Population 413
- P.O. Box 24 / 117 E. Prime
Downing, MO 63536
- Phone 660-379-2515
Fax 660-379-2830
- Mayor - Alan Garrett
Aldermen - Ray Bange, Bill Anderson, Gene Bruner, Joy VanWye
- Meeting Dates - 1st Monday
- City Clerk - Carol Dryden
cityhallofdowning@outlook.com



Village of Glenwood

- Population 233
- 803 Main St.
Glenwood, MO 63541
- Phone 660-341-3104
Fax 660-457-3725
- Mayor - Vic Farrell
Trustees - Marty Gravett, Ward Clausen, Kala Fugate
- Meeting Date - 2nd Tuesday
- City Clerk - Denny Brummer



City of Greentop

- Population 589
- P.O. Box 119 / 104 S. Main
Greentop, MO 63546
- Phone 660-949-2520
Fax: 660-949-2520
- Mayor - Steve March
Aldermen - Kim Veach, Doug Lindquist, Travis McClanahan, Justin Ray
- Meeting Date - 1st Thursday
- City Clerk - Martha Chapman
gtclerk@marktwain.net



City of Queen City

- Population 697
- P.O. Box 400/
701 N. Hirschell St.
Queen City, MO 63561
- Phone 660-766-2735
Fax 660-766-2804
- Mayor - John March
Aldermen - Bill Byrn, Becky Douglas, Bill Ford, Brenda Barnes
- Meeting Date - 3rd Wednesday
- City Clerk - vacant
cityofqueencity63561@gmail.com

A village has a population of 500 or less, while a Class 4 city has a population of between 500 - 2,999 inhabitants. **There are roughly 300 villages in Missouri and 550 Class 4 cities.**



Villages are permitted only one form of government – **an elected board of trustees, five in number** if the village has fewer than 2,500 population



City of Memphis

www.cityofmemphismo.com

- Population 1706
- 125 W. Jefferson Memphis, MO 63555
- Phone 660-465-7285
Fax 660-465-7342
- Mayor - Aaron Dale / Aldermen - Katie Harris, Jobe Justice, Lane Campbell, Jenny Aldridge
- Meeting Date: 1st Thursday 7:00 p.m.
- City Clerk - Nikki Beard
cityclerk@cityofmemphismo.com



Village of Arbela

- Population 25
- 27256 Rathburn St.
Arbela, MO 63432
- Phone 660-945-3825
- Mayor - Dennis Giberson
Trustees - Gordon Wiley, Dee Wiley, Christi Wiley, Brenda Giberson
- Meeting Date - 2nd Wednesday
- City Clerk - Twila Stevenson
twila.m.stevenson@gmail.com



City of Granger

- Population 25
- PO Box 107 Granger, MO 63442
- Phone 660-988-0247
- Mayor - Shane Shannan / Aldermen - Jason Tague, Dana Shannan, Vienna Hutchinson, Devin Holt
- Meeting Dates - 1st Wednesday
- City Clerk - Dana Shannan



Village of Rutledge

- Village of Rutledge
- Population 53
- P.O. Box 35
Rutledge, MO 63563
- Phone 660-341-1970
- Fax 660-883-5805
- Mayor - Maynard Johnston
- Trustees - Carol McCabe, Barbara Moore
- Meeting Dates - 3rd Monday
- City Clerk - Luke Zimmerman
lukemzimmerman@gmail.com



City of South Gorin

- Population 68
- P.O. Box 45 Gorin, MO 63543
- Phone 660-282-3301
Fax 660-282-3301
- Mayor - Teresa Norton / Aldermen - Gene Berry, Patricia Brock, Frank Nicholson, Teel Plum
- Meeting Dates - 2nd Wednesday
- City Clerk - Ginger Bass

Fourth class cities are permitted to have the mayor-board of aldermen form and the mayor-city administrator form. **The board of aldermen may adopt the city administrator form by ordinance**, without a vote of the people.

COVID-19, CARES Act 2020, American Rescue Plan Act 2021...



NEMO RPC awarded \$400,000 CARES Act Funding grant for economic development

Already an active participant in community efforts to recover from the COVID-19 pandemic, the Northeast Missouri Regional Planning Commission, on August 12, 2020 gained additional assets to aid in these endeavors. The United States Economic Development Administration announced a series of CARES Act Recovery Assistance grants to Councils of Government and Regional Planning Commissions across North Missouri. The \$400,000 grants will enable the agencies to assist businesses, local governments and community partners as they recover and rebuild economically from the COVID-19 pandemic.

As part of the Economic Development Administration's CARES Act Recovery Assis-

tance, EDA provided the supplemental financial assistance award to the NEMO RPC to aid in the development of an economic recovery and resiliency plan, tied to the applicant's approved Comprehensive Economic Development Strategy, to address the economic impacts of the coronavirus pandemic. The grant can aid the NEMO RPC in the provision of technical assistance, as necessary, to local governments, businesses, and other stakeholder organizations, and can also help fund the appropriate technology and staff support for these pandemic-response activities.

The CARES Act, signed into law by President Donald J. Trump on March 27, 2020, provided EDA with \$1.5 billion for economic development assistance programs to help communities prevent, prepare for, and respond to coronavirus.

Broadband Study

On August 8, 2021 NEMO RPC awarded a \$92,350 contract to CCG Consulting and Finley Engineering to complete a regional broadband mapping study.

“We are looking forward to partnering with CCG and Finley to document what portions of our six-county service area do not have adequate broadband service available,” said NEMO RPC Executive Director Derek Weber. “With an increasing amount of federal and state funding for broadband expansion and upgrading, we feel like it will be very beneficial to our communities to have a more accurate assessment of which areas are truly unserved or underserved in today’s broadband market which could potentially open the door to funding to add or upgrade service to these areas.”

The study will seek to improve upon the existing Federal Communications Commission (FCC) service mapping data, which currently is the determining factor for grant funding eligibility. In 2020, more than \$4 million was awarded by the Rural Digital Opportunity Fund (RDOF) to fund installation of broadband in portions of the six counties there were classified as unserved by the FCC mapping data. The bulk of those awards went to Lewis and Clark counties where nearly \$3 million was awarded to LTD Broadband, LLC to add service for a combined 784 locations. Service was added for just one location in Knox County and no funding was awarded in Schuyler County.

“The RDOF awards, or more accurately the lack of awards in Schuyler and Knox counties, raised some red flags in the communities about the reliability of the FCC service mapping,” said Weber. “We believe this study will arm us with more complete and precise information about areas in our community that have been classified as served by the FCC but in fact are not,

and thus should be included in federal and state funding opportunities to bring them adequate broadband access.”

The final product will include a set of recommendations for each county on the best way to move forward to address any of the broadband service gaps identified in the study.

The project is being funded as part of the CARES Act Recovery Assistance grant awarded to NEMO RPC by the United States Economic Development Administration (EDA).

CARES Act

The Adair County Commission received \$2,973,240 in federal Coronavirus Aid, Relief and Economic Security (CARES) Act to assist cities, political subdivisions, public agencies and businesses for reimbursable COVID-19 expenses that they have incurred, beginning March 1, 2020. The county was able to reimburse costs up to Dec. 30.

NEMO PRC assisted Adair County in reviewing the act, developing an application and administering to process to meet audit requirements. NEMO RPC staff member Marla Greiner handled the grant administration for Adair County, reviewing 186 applications from small businesses, nonprofit organizations, schools and the health department.

Verified applications were forwarded to the Adair County Commission for review and approval. Those that were approved were forwarded to the county treasurer for payment to the applicant. NEMO RPC staff will maintain files for the county and track all requests and expenditures.

it's not about
ideas, **it's about**
making ideas
happen



nemorpc/rdc

making Northeast Missouri a better, safer
place to live and grow



+(1) 660 465 7281
FAX 660 465 7163



chrisfeeney@nemorpc.org
www.nemorpc.org



NEMO RPC / RDC
121 South Cecil Street Memphis, MO 63555
